

DIRECTIONS TO PAYSON FIELD

FROM THE NORTHEAST:

TAKE I-95 SOUTH

TAKE EXIT 9 TO ROUTE 1 SOUTH. TRAVEL APPROXIMATELY 2.8 MILES AND TAKE A LEFT ONTO NORTH STREET (AT CITGO GAS STATION)

TRAVEL APPROXIMATELY 1.5 MILES ON NORTH STREET THEN BEAR LEFT ONTO PAYSON ROAD. THE ENTRANCE TO THE FIELDS IS APPROXIMATELY 0.3 MILES ON YOUR LEFT DIRECTLY ACROSS FROM NEFF DRIVE.

FROM THE NORTHWEST:

TAKE 495 SOUTH

TAKE EXIT 14A TO ROUTE 1 NORTH. TRAVEL APPROXIMATELY 3.3 MILES AND BEAR RIGHT ONTO MAIN STREET (AT THE DUNKIN DONUTS).

TRAVEL APPROXIMATELY 0.3 MILES AND TURN RIGHT ONTO ROUTE 140 SOUTH.

TRAVEL APPROXIMATELY 1.0 MILES. AT THE THIRD SET OF LIGHTS TURN HARD LEFT ONTO NORTH STREET.

AT THE ROTARY TAKE FIRST EXIT ONTO CHESTNUT STREET

TAKE YOUR FIRST LEFT ONTO PAYSON ROAD. THE FIELD ENTRANCE IS APPROXIMATELY 0.2 MILES ON YOUR RIGHT DIRECTLY ACROSS FROM NEFF DRIVE.

FROM THE SOUTH:

TAKE 495 NORTH

TAKE EXIT 14A TO ROUTE 1 NORTH. TRAVEL APPROXIMATELY 3.3 MILES AND BEAR RIGHT ONTO MAIN STREET (AT THE DUNKIN DONUTS).

TRAVEL APPROXIMATELY 0.3 MILES AND TURN RIGHT ONTO ROUTE 140 SOUTH.

TRAVEL APPROXIMATELY 1.0 MILES. AT THE THIRD SET OF LIGHTS TURN HARD LEFT ONTO NORTH STREET.

AT THE ROTARY TAKE FIRST EXIT ONTO CHESTNUT STREET

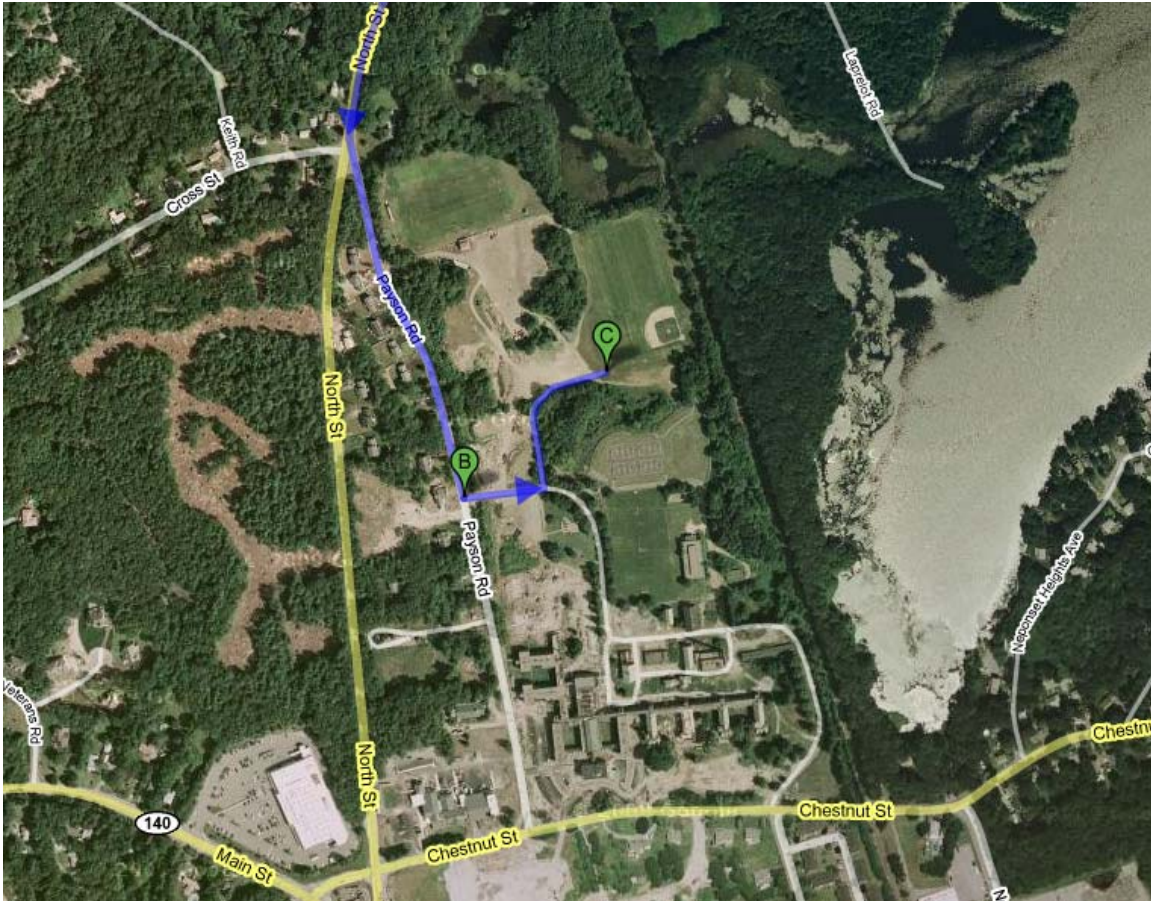
TAKE YOUR FIRST LEFT ONTO PAYSON ROAD. THE FIELD ENTRANCE IS APPROXIMATELY 0.2 MILES ON YOUR RIGHT DIRECTLY ACROSS FROM NEFF DRIVE.

FROM THE NORTHEAST

PAYSON SOCCER FIELDS

B = ENTRANCE

C = PLAYING FIELD



FROM THE NORTHWEST AND SOUTH

PAYSON SOCCER FIELDS

B = ENTRANCE

C = PLAYING FIELD

